



www.jwell.cn

品质卓越 完美如一



地址：江苏省常州市溧阳中关村开发区上上路118号
Add: No.118, Shangshang Road, Liyang, Changzhou city, China
Whatsapp/Wechat/Mobile: +86-137 7300 0606
E-mail: salbl@jwell.cn

版本号Edition No.: 2022.06

GIVES PLASTIC NEW LIFE

给予塑料新的生命



聚酯再生解决方案

金纬机械 JWELL MACHINERY



A Global Supplier of Complete Solutions on Extrusion Technology
 金纬机械—全球挤出技术 整体解决方案供应商

10+ 驻海外办事处 Overseas offices
 580+ 技术研发&工程师 R&D Engineer
 3,000+ 金纬机械员工人数 Jwell Employee
 8+ 个制造基地 Manufacture Bases
 500+ 项独家专利技术 Patents
 1,000,000m² 工厂面积 Plant Area



80年代初

金海螺第一代螺杆研制成功
 In the early 1980s, the first generation screw of JINHAILUO was successfully developed

1997

上海金纬机械
 Shanghai JWELL Machinery

2008

苏州金纬机械
 Suzhou JWELL Machinery

2012

常州金纬机械
 Changzhou JWELL Machinery

2018

贝克威尔 (泰国)
 Bkwell (Thailand)

2019

浙江金纬智能装备
 Zhejiang JWELL Machinery

2020

金纬公司业绩突破50亿人民币
 Jwell's annual sales exceeded CNY 5 billion

2021

滁州金纬机械
 Chuzhou JWELL Machinery

2022

连续11年荣获中国塑料机械挤出行业排名首位
 Ranked first in China's plastic machinery extrusion industry for 11 consecutive years

We Know Extrusion

回收聚酯瓶的重要性

Importance Of Recycling Polyester Bottle

根据美国塑料回收协会研究 (APR), 生产 1 千克原生 PET 塑料树脂大约需要排放 2.23 千克二氧化碳, 而生产 1 千克再生 PET 塑料树脂只需要排放 0.91 千克二氧化碳。从极限理论上来看, 全球 2019 年消费的 2411 万吨 PET 瓶全部回收用于生产再生纺织品, 相较于使用原生 PET 树脂生产纺织品, 可以减少 3183 万吨的碳排放, 约 610 万辆车一年的碳排放量。可以看到, 通过 PET 瓶回收再生可持续发展路径, 可显著减少二氧化碳温室气体的排放, 这将为实现全球“碳中和”目标带来巨大贡献。

回收的 PET 瓶子, 经过破碎, 清洗, 变成 PET 瓶片, 可以供应给化纤厂, 经过再加工生成再生 PET 粒子, 可以做成衣服或包等。目前, 再生 PET 大部分用于化纤类 PET 制品。

再生 PET 还广泛用于包装材料, 如 PET 餐盒、PET 打包带、PET 瓶子等。瓶到瓶是目前世界范围内一个热门的话题。

常州大云环保科技有限公司是一家致力于塑料回收整套装备的研发和制造的高新技术公司, 我们提供 PET 闭环设备: 从 PET 瓶破碎清洗线, 到再生造粒线, 再到 PET 片材生产线以及 PET 纺丝生产线。大云给予塑料新的生命。

According to the American Institute of Plastic Recycling (APR), Producing 1 kg virgin PET plastic resin will emit about 2.23 kg of CO₂, while producing 1 kg recycled PET plastic resin only emit 0.91 kg of CO₂. In theory, If the 24.11 million tons of PET bottles consumed globally in 2019 are all recycled for the production of textiles., Compared with the production of textiles using virgin PET resin, the carbon emissions can reduce 31.83 million tons, which is about 6.1 million cars' total one year's carbon emissions. It can be seen that through the sustainable development path of PET bottle recycling, carbon dioxide greenhouse gas emissions can be significantly reduced, which will make a great contribution to the realization of the global "carbon neutrality" goal.

Recycled PET bottles, after crushing, cleaning, change to PET bottle flakes, can be supplied to chemical fiber factory, after reprocessing to recycled PET particles, can be made into clothes or bags, etc. At present, reclaimed PET is mostly used in chemical fiber PET products.

Reclaimed PET is also widely used in packaging materials, such as PET food container, PET packaging belts, PET bottles and so on. Bottle-to-bottle is currently a hot topic around the world.

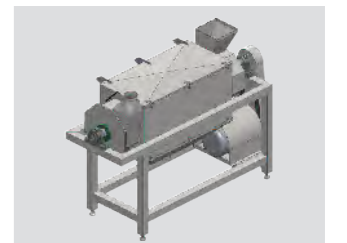
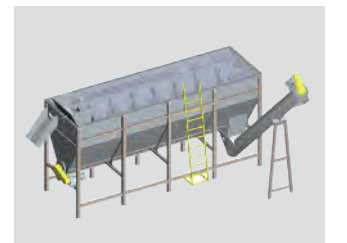
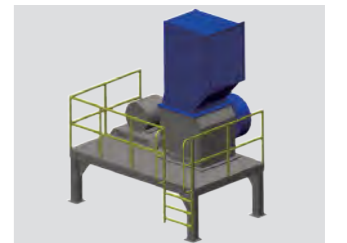
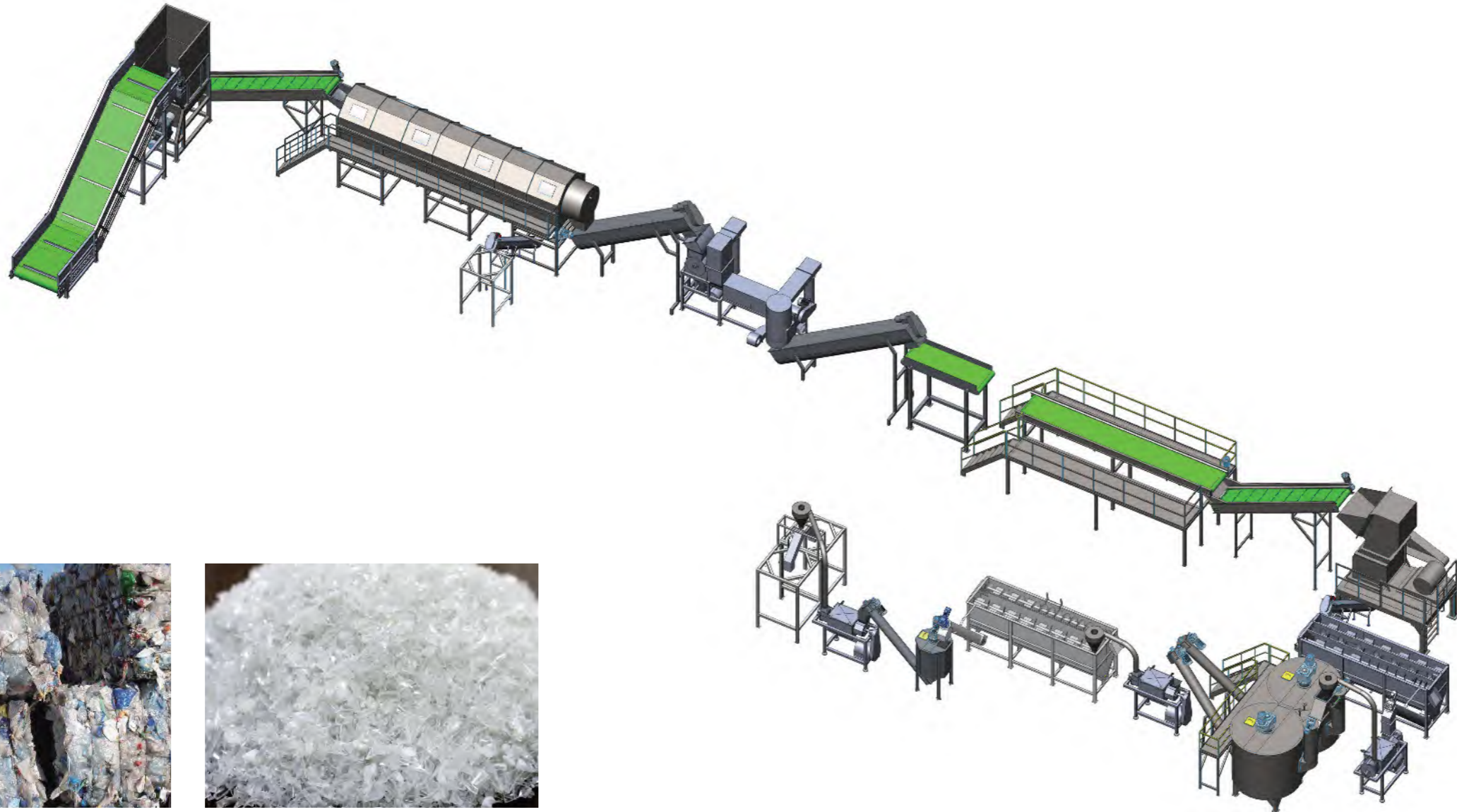
Changzhou Dyun Environmental Technology Co., Ltd. is a high-tech company dedicated to the r&d and manufacturing of plastic recycling equipment. We provide PET closed-loop equipment: from PET bottle crushing and cleaning line, to recycling pelleting line, and then to PET sheet production line and PET spinning production line. Dyun gives plastic new life.



PET 清洗回收线

PET Bottle Recycling Line

化纤级洗瓶线工艺流程

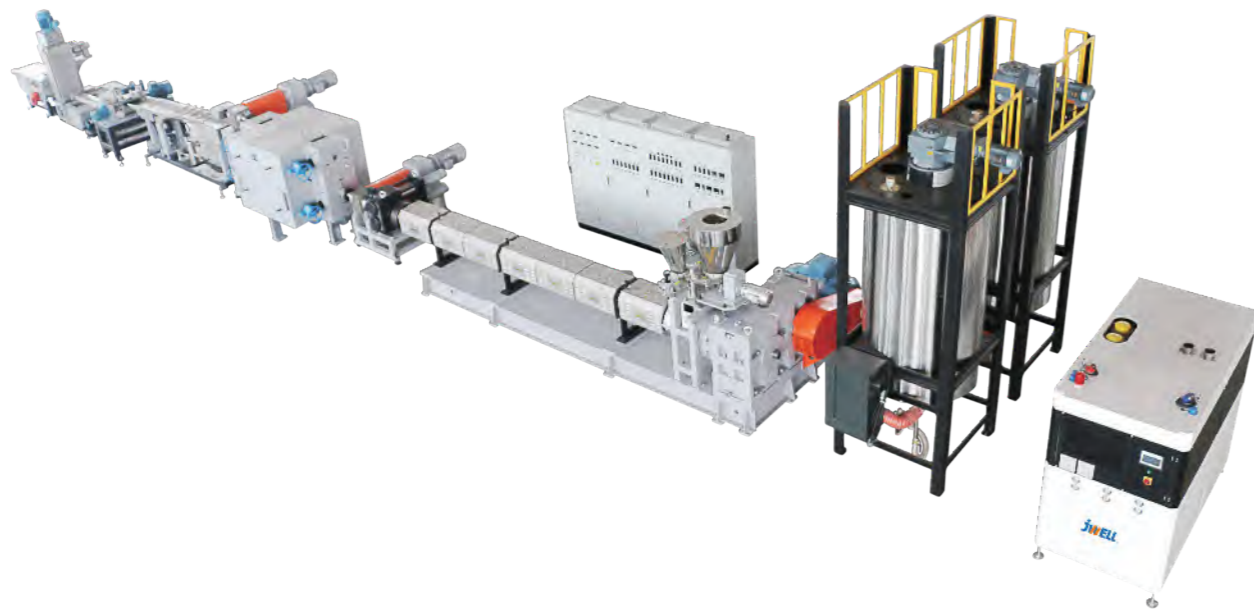


JWT系列PET瓶片单螺杆回收造粒机组

JWT Series PET Bottle Flake Single Screw Extruder Pelleting Machine

JWT系列PET瓶片单螺杆回收造粒机组主要用于生产高标准的纺丝级和食品级的PET颗粒等。配备了除湿结晶干燥系统，螺杆采用特殊的LTM低温混合元件，主机采用节能的保温罩结构，配备了增压泵系统及双级双缸熔体过滤器，保证了物料所受温度的均匀性，提高物料的纯净度；该造粒线可以有效控制B值和L值，粘度降低到最低。

JWT series PET bottle flake single screw extruder pelletting machine is mainly used to produce high standard spinning grade and food grade PET particles. The production line is equipped with dehumidification crystallization drying system. Screw adopts special LTM low-temperature mixing element, the extruder adopts energy-saving heat preservation cover structure, equipped with booster pump system and two-stage dual-cylinder melt filter, to ensure the uniformity of the temperature of the material, improve the purity of the material; The pelletizing line can effectively control B and L values and achieve the lowest viscosity drop.



主机型号 Model	长径比 L/D	转速 Speed	产量 Capacity
JWT130	30	20-80rpm	250-350kg/h
JWT160	30	20-80rpm	450-600 kg/h
JWT190	30	20-80rpm	800-1200kg/h

CJWH系列PET瓶片双螺杆回收造粒机组

CJWH Series PET Bottle Flake Twin Screw Extruder Pelleting Machine

PET瓶片回收造粒在世界范围内都很受欢迎，客户对产能要求也越来越高。PET瓶片回收的过程中对粒子的粘度和色泽有严格的要求，经过多年研发，投入大量的人力和物力，金纬公司针对该市场开发了高产节能型的双螺杆回收造粒机组，深受国内外客户好评。该造粒机组采用先进的水中拉条切粒方式，操作简单，维护方便。

PET bottle flake recycling pelletizing is very popular in the world, customers need higher capacity. There are strict requirements on particle viscosity and color in the recycling process of PET bottle flakes. After years of research and development, Dyun invested a large number of manpower and material resources, and developed a high capacity and energy-saving twin-screw extruder pelletizing machine for this market, which is well received by customers at domestic and abroad. The pelletizing machine adopts advanced strand in water cutting method, easy to operate and easy to maintain.



主机型号 Model	长径比 L/D	转速 Speed	产量 Capacity
CJWH75	40-48	300-500rpm	500-600kg/h
CJWH85	40-48	300-500rpm	600-800 kg/h
CJWS95	40-48	300-500rpm	1000-1500kg/h

PET环保片材生产线

PET Environmental Sheet Extrusion Line

PET环保片材生产线:

金纬推出的双螺杆免干燥排气型PET片材生产线具有低能耗、工艺简单，设备使用维护方便的特点。其特有的螺杆组合结构有效的减少了PET树脂的粘度降，对称式薄壁型辊筒提高了冷却效率同时提升了产能和片材品质，多组分喂料装置可合理的控制新料、回料、色母等的比例，所生产的片材可用于吸塑印刷包装等领域。

PET environmental sheet extrusion line:

JWELL develops the parallel twin screw extrusion line for PET sheet, this line equipped with degassing system, and no need drying and crystallizing unit. The extrusion line has the properties of low energy consumption, simple production process and easy maintenance. The segmented screw structure can reduce the viscosity loss of PET resin, the symmetrical and thin-wall calender roller heighten the cooling effect and improve the capacity and sheet quality. Multi components dosing feeder can control the percentage of virgin material, recycling material and master batch precisely, the sheet is widely used for thermoforming packaging industry.



涤纶纺丝工程—环保型涤纶(瓶片)POY纺丝解决方案

Polyester Spinning Project—Recycling PET-POY Spinning Solutions

设备介绍:

本方案适用于反应釜工程或熔融瓶片纺丝方法生产涤纶预取向丝 (R-POY) 产品。

技术特点:

- 特殊螺杆机筒设计，适纺回料。
- 双级过滤器配置增压泵，保证熔体压力均匀输出及过滤效果。
- 采用新型回料专用纺丝箱体，比普通纺丝箱体节能30% 配置压力在线监测装置。
- 采用下装式杯形组件，提高了熔体在组件内流动的均匀性，保温性能提高，板面温度均匀，同时减轻了操作工人的劳动强度，纺丝效率提高。
- 回料专用侧吹风系统，蜂窝式吹风结构，风速均匀稳定，纤维条干好。
- 吹风风量和吹风面积单独可调，给使深层次工艺调节成为可能。
- 带有精密卷绕的全自动切换卷绕机，具有极高的切换成功率和优秀的底层丝退绕和过尾性能。



Equipment Introduction :

Suitable for Reaction Kettle and Melt-Bottle Flakes Spinning in production of polyester yarn (R-POY).

Technical Feature

- Special designed Screw/Barrel,Suitable for Recycling Materials.
- Double Stage CPF with Boost Pump,Make Sure the Melt pressure in average & Filtration Performance.
- Adopted Newly designed Spin-Beam with less energy consumption by 30% compared with conventional ones & Equipped with pressure variation monitor Device .
- Adopted Bottom mounted spin packs with better melt flow, better temperature evenness and less manpower required.
- New Design Quenching System for Recycling Filaments which can providing smoother air blowing for the better yarn evenness.
- The adjustable Air-Blowing area and Air Volume enabling further spinning process adjustment.
- Fully Automatic Winders with precision winding, featuring higher successful changer-over rate and excellent bottom layer yarn unwinding and tail yarn shifting.



DYTSS系列双轴撕碎机

DYTSS Series Two-shaft Shredder

DYTSS双轴撕碎机具有低噪音、低能耗、高产量的特性。充分体现了低转速，大扭矩剪切设计的优越性。该系列撕碎机特别适合应用于中空型塑料制品的破碎。通过该机剪切，可以增加物料的堆积密度，从而降低运输成本。此外，破碎后可对物料做进一步处理，例如物料分离、清洗以及造粒等。

DYTSS two-shaft shredder has the characteristics of low noise, low energy consumption and high output. Fully demonstrate the advantages of low speed, large torsion shear design. This series shredder is especially suitable for crushing hollow plastic products. Cutting by this machine can increase the bulk density of materials, thus reducing the transportation cost. In addition, the material can be further treated after shredding, such as material separation, cleaning and granulation.



型号 Model	动刀回转直径 (mm) Rotor Dia.	驱动功率(kw) Drive Power	破碎腔最大尺寸(mm) Crushing Chamber Size Max.
DYTSS130	φ430	22x2	1000x800
DYTSS160	φ514	37x2	1300x950
DYTSS190	φ615	55x2	1800x1200

DYPS-Z系列重型破碎机

DYPS-Z Series Heavy Crusher

DYPS-Z系列重型破碎机是粉碎PET瓶的利器，该破碎机远销欧美等数十个国家，深受客户好评。

箱体：主箱体采用牢固的焊接钢结构，经数控机床(CNC Machine)精密加工而成。具有厚度大、强度高、耐磨性强、无污染、使用寿命长等特点。上部箱体可用液压装置轻易开启，方便检修。

主轴：采用优质钢材加工而成，经动、静平衡校验，具有韧性好、工作中不易变形、工作状态稳定等特点。采用最新“V”形切割技术，转子可设计制造成5片式，7片式，9片式，使转刀在工作中实现切料均匀、低能耗、低噪音的效果。

DYPS-Z series heavy crusher is a powerful tool for crushing PET bottles. The crusher is exported to Europe and America and other dozens of countries, well received by customers.

Main box: the main box body adopts solid welded steel structure and is precision machined by CNC Machine. It has the characteristics of large thickness, high strength, strong wear resistance, no pollution and long service life. The upper box can be easily opened by hydraulic device for easy maintenance.

Main shaft: it is made of high quality steel and tested by dynamic and static bearing balance. It has the characteristics of good toughness, not easy to deform during work and stable working state. Using the latest "V" cutting technology, the rotor can be designed and manufactured into 5 pieces, 7 pieces, 9 pieces, so that the rotary knife in the work to achieve uniform cutting, low energy consumption, low noise effect.



型号 Model	动刀回转直径 (mm) Rotor Dia.	驱动功率(kw) Drive Power	参考产量(kg/h) Output
DYPS-Z 1000	φ700	55-110	1200
DYPS-Z 1200	φ800	90-132	1600
DYPS-Z 1500	φ1000	110-200	2200